



# SuperGrill 3-in-1

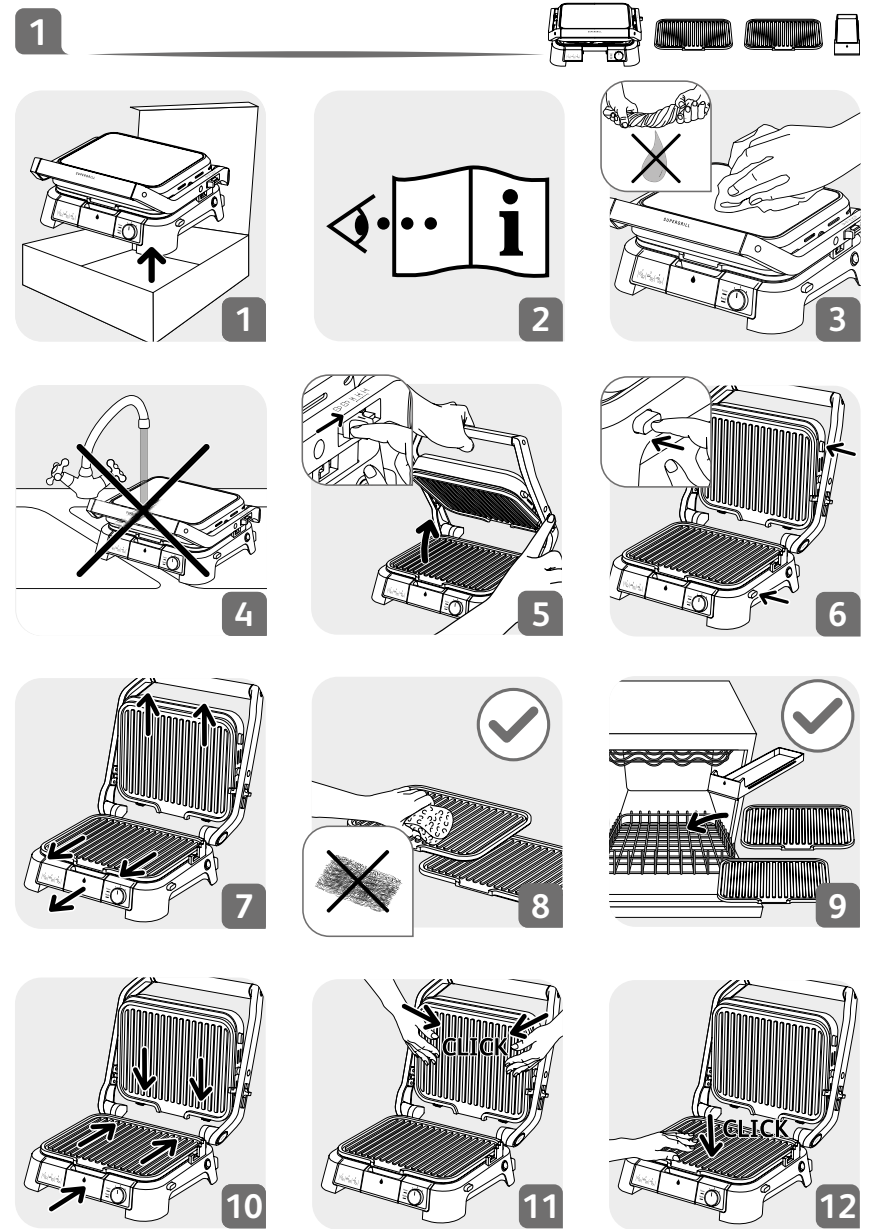
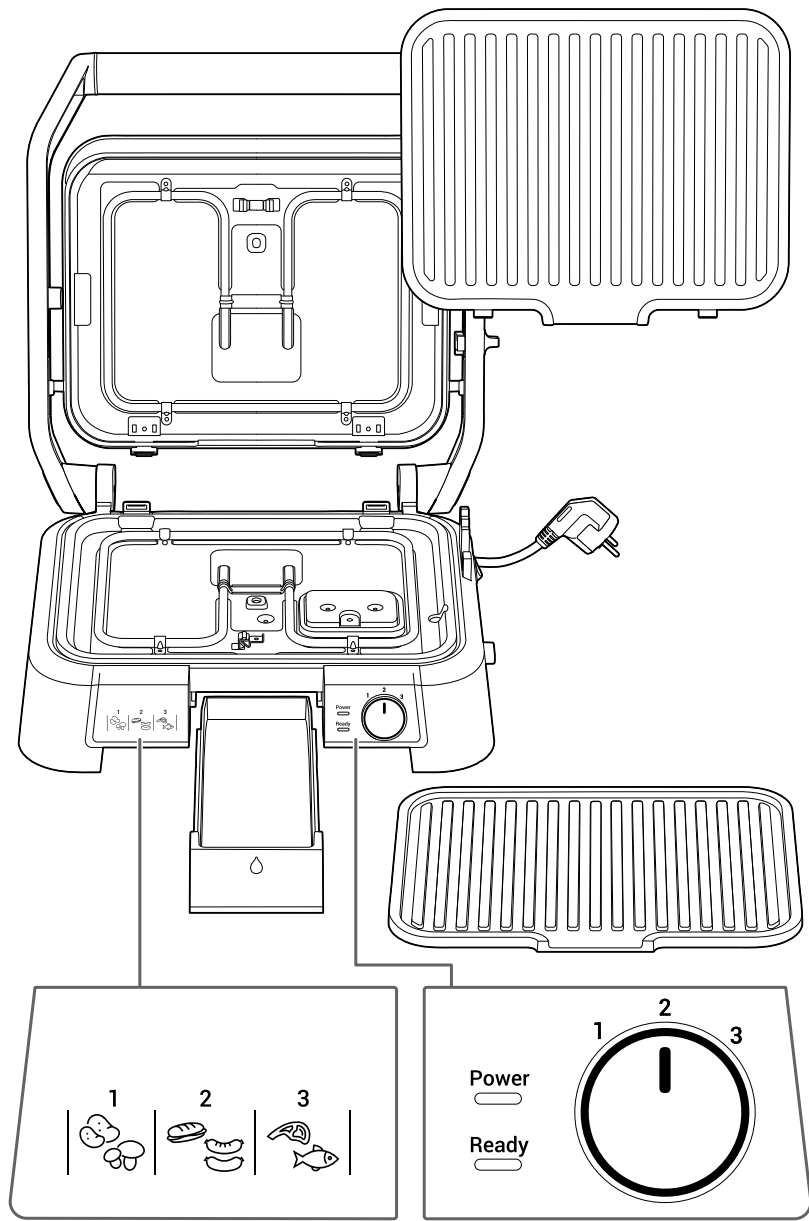
---

Contact Grill

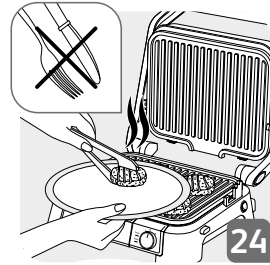
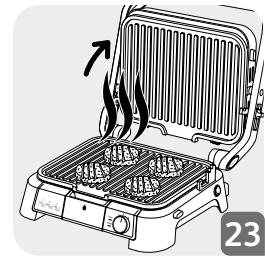
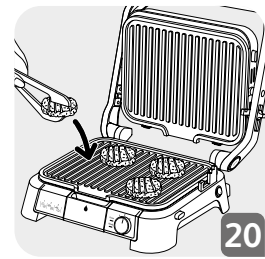
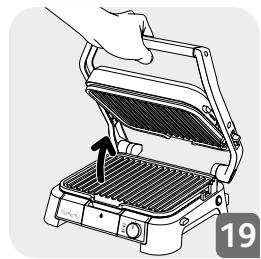
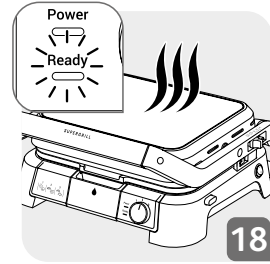
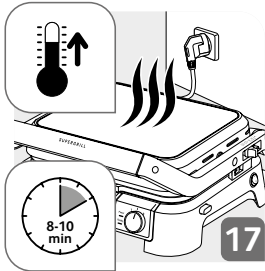
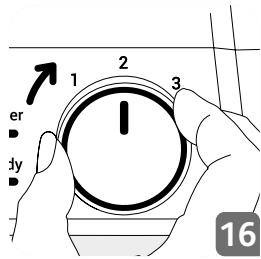
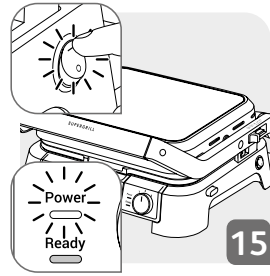
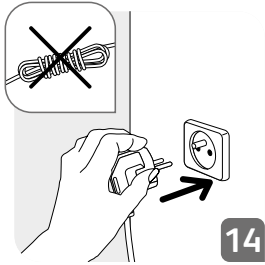
Bruksanvisning - svenska / Brugsanvisning - dansk  
/ Bruksanvisning - norsk / Käyttöohjeet - suomi  
/ Instructions of use - english

04 - 15

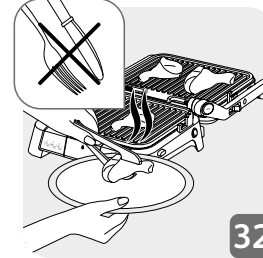
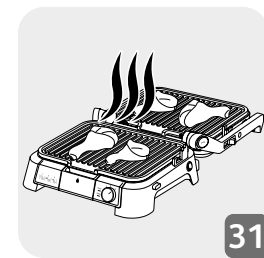
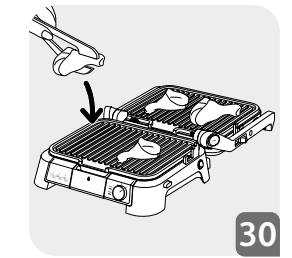
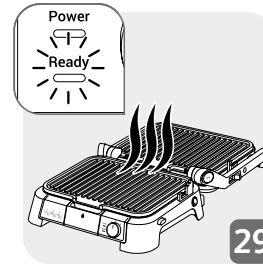
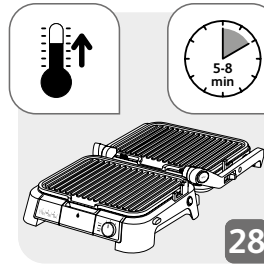
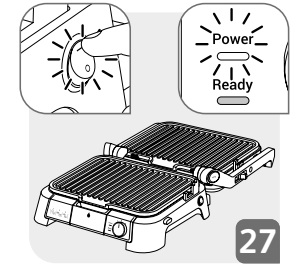
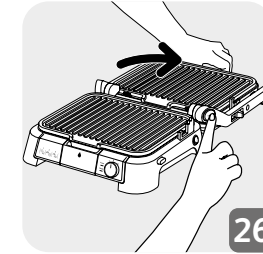




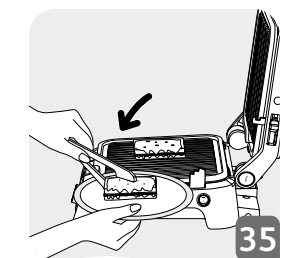
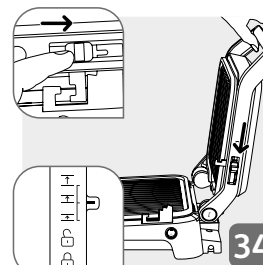
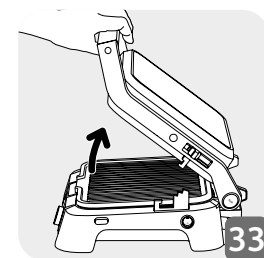
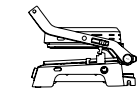
2

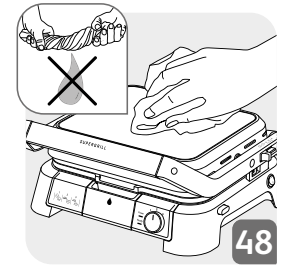
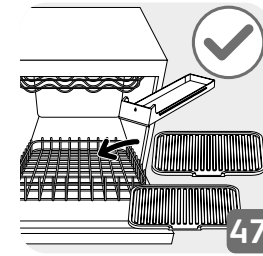
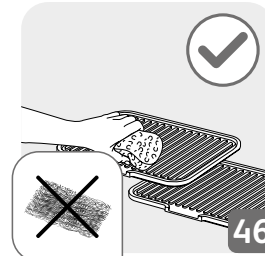
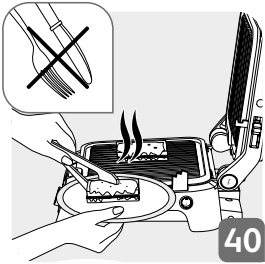
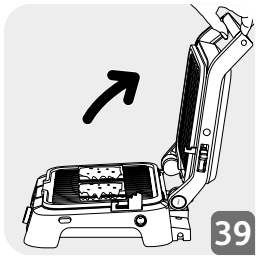
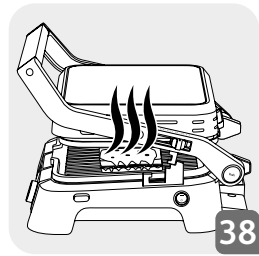
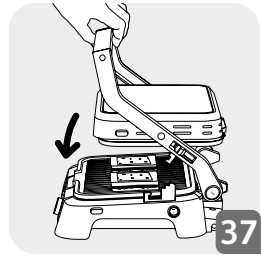
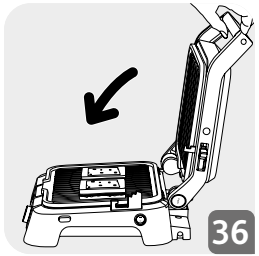


3

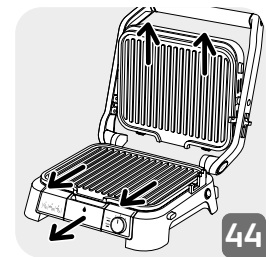
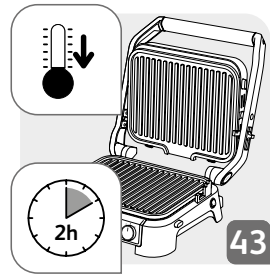
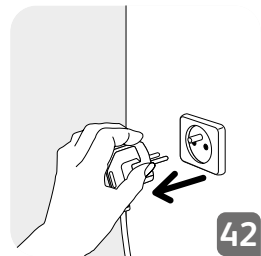
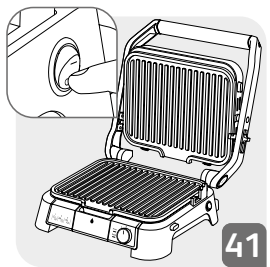
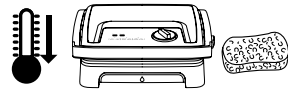


4

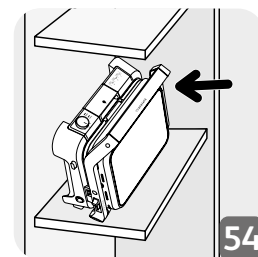
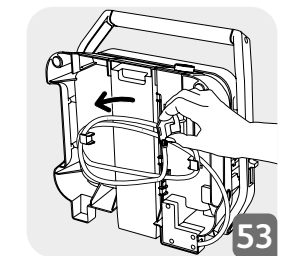
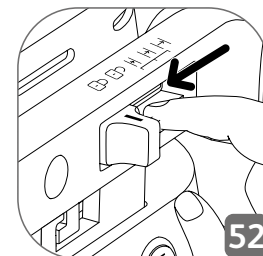
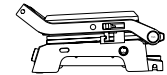




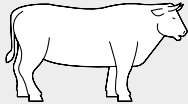

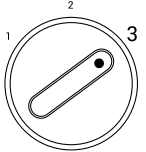


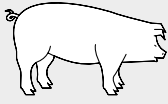








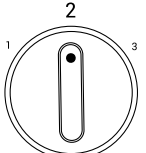
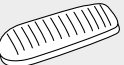


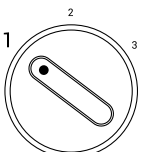



5



6



		 *	 T°	
		5 – 11 min		
		3-4 min		
		3-4 min		
		5-9 min		
		17-25 min		
		4-10 min		
		4-6 min		
		1-2 min		
		7-9 min		
		5-8 min		
		3-5 min		
		15-25 min		
		3 -7 min		

Depending on thickness / Beroende på tjocklek / Afhængig af tykkelse / Avhengig av tykkelse / Paksuudesta riippuen



### Var rädd om miljön!

- ① Din apparat innehåller olika material som kan återanvändas eller återvinnas.
- ➔ Lämna den på en återvinningsstation eller på en auktoriserad serviceverkstad för omhändertagande och behandling.

Information om din garanti finns på [obhnordica.se](http://obhnordica.se)

### TEFAL - OBH Nordica Group AB

Löfströms Allé 5

172 66 Sundbyberg

Sweden

Phone: +46 8 629 25 00

[www.obhnordica.se](http://www.obhnordica.se)

### Teknisk data

OBH Nordica TYPE GO510DNO

220-240V ~, 50-60 Hz

2000 watt



Rätt till löpande ändringar förbehålles.



### Vi skal alle være med til at beskytte miljøet!

- ① Apparatet indeholder mange materialer, der kan genvindes eller genbruges.
- ➔ Bring det til et specialiseret indsamlingssted for genbrug eller et autoriseret serviceværksted, når det ikke skal bruges mere.

Find information om din garanti på [obhnordica.dk](http://obhnordica.dk)

#### Groupe SEB Danmark A/S

Delta Park 37, 3. sal  
2665 Vallensbæk Strand  
Denmark  
Phone: +45 43 350 350  
[www.obhnordica.dk](http://www.obhnordica.dk)

#### Tekniske data

OBH Nordica TYPE GO510DNO  
220-240V ~, 50-60 Hz  
2000 watt



Ret til løbende ændringer og forbedringer forbeholdes.



### Tenk miljøvern!

- ① Apparatet inneholder verdifullt materiale som kan gjenvinnes eller resirkuleres.
- ➔ Lever det ved et lokalt kommunalt gjenvinningsanlegg.

Finn informasjon om din garanti på [www.obhnordica.no](http://www.obhnordica.no)

#### Groupe SEB Norway AS

Philip Pedersens vei 20, 3 etg.  
1366 Lysaker  
Norway  
Phone: +47 22 96 39 30  
[www.obhnordica.no](http://www.obhnordica.no)

#### Tekniske data

OBH Nordica TYPE GO510DNO  
220-240V ~, 50-60 Hz  
2000 watt



Retten til fortløpende endringer forbeholdes.



### Huolehtikaamme ympäristöstä!

- ① Laitteesi on varustettu monilla arvokkailla ja kierrätettävillä materiaaleilla.
- ➔ Toimita laitteesi keräyspisteeseen tai sellaisen puuttuessa vaikka valtuutettuun huoltokeskukseen, jotta laitteen osat varmasti kierrätetään.

Tuotettasi koskevat takuutiedot löydät osoitteesta [www.obhnordica.fi](http://www.obhnordica.fi)

**Groupe SEB Finland OY**  
**Bolero Business Park, Atomitie 2**  
**00370 Helsinki**  
**Finland**  
**Phone: +358 9 8946150**  
**[www.obhnordica.fi](http://www.obhnordica.fi)**

### Tekniset tiedot

OBH Nordica TYPE GO510DNO  
220-240V ~, 50-60 Hz  
2000 watt



Oikeus muutoksiin pidätetään.



### Environment protection first!

- ① Your appliance contains valuable materials which can be recovered or recycled.
- ➔ Leave it at a local civic waste collection point.

Information about your warranty is available at [www.obhnordica.com](http://www.obhnordica.com)

**TEFAL - OBH Nordica Group AB**  
**Löfströms Allé 5**  
**172 66 Sundbyberg**  
**Sweden**  
**Phone: +46 8 629 25 00**  
**[www.obhnordica.com](http://www.obhnordica.com)**

### Technical data

OBH Nordica TYPE GO510DNO  
220-240V ~, 50-60 Hz  
2000 watt



These instructions are subject to alterations or improvements.



Scan the QR code  
to receive our latest offers.